



SYMBIOSIS STATISTICAL INSTITUTE

Symbiosis International (Deemed University)

(Established under Section 3 of the UGC Act, 1956)

Re-accredited by NAAC with 'A++' Grade | Awarded Category - I by UGC

Founder: Prof. Dr. S. B. Mujumdar, M. Sc., Ph. D. (Awarded Padma Bhushan and Padma Shri by President of India)

Final Placement Report Batch 2021-23

Greetings from Symbiosis Statistical Institute!

We are delighted to present the final placement report for the batch of 2021-23 at Symbiosis Statistical Institute (SSI), Symbiosis International (Deemed University). The recently concluded placement season has been a resounding success, marking a positive beginning again this year. Through a combination of offline and online placement drives, SSI has achieved a remarkable milestone by placing **100%** students of Batch 2021-23 by March 2023. This accomplishment stands as a testament to the efficacy of our structured interdisciplinary industry oriented programme and the unwavering quality and support of our dynamic student.

Throughout the placement season, SSI Pune had the privilege of hosting an impressive array of esteemed recruiters spanning diverse sectors such as Financial Services, Technology, Information System, Professional Services, Gaming, Information Services, Pharmaceutical Manufacturing, Telecommunication, Banking, Healthcare, IT Services and IT Consulting and Market Research. Our students have successfully secured professional roles in renowned organizations, assuming positions such as Business Research Analyst, Business Analyst, Quant Analyst, Analyst, Data Scientist, Data Analyst, Statistician, Associate Consultant, Deputy Manager II, Statistical Programmer, and many others.

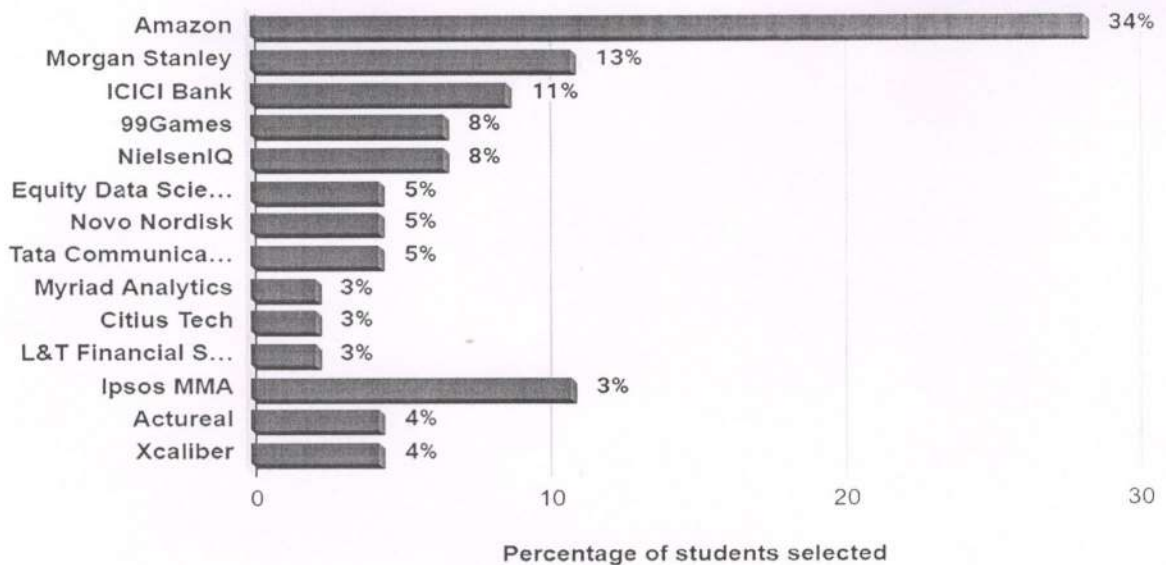
We extend our deepest gratitude to the companies and firms that participated in the placement drive, demonstrating their trust with us. Their invaluable contribution has played an instrumental role in shaping the career paths of our students. We express our appreciation to the following organizations for their active involvement in our placement season: Amazon, Morgan Stanley, 99 Games, Myriad Analytics, NielsenIQ, Equity Data Science, Novo Nordisk, Citius Tech, Tata Communications, ICICI Bank, Larsen and Toubro Financial Services, Ipsos MMA, Tata Consultancy Services, Actu Real, XCaliber, and Price Labs.

These esteemed recruiters have presented our students with exceptional opportunities, enabling them to embark on promising professional journey. It is evident to note that the highest offered Cost to the Company (CTC) this year stands at Rs 18.42 LPA, with a Median Package of 11.4 LPA and an average CTC of Rs 12.79 LPA.

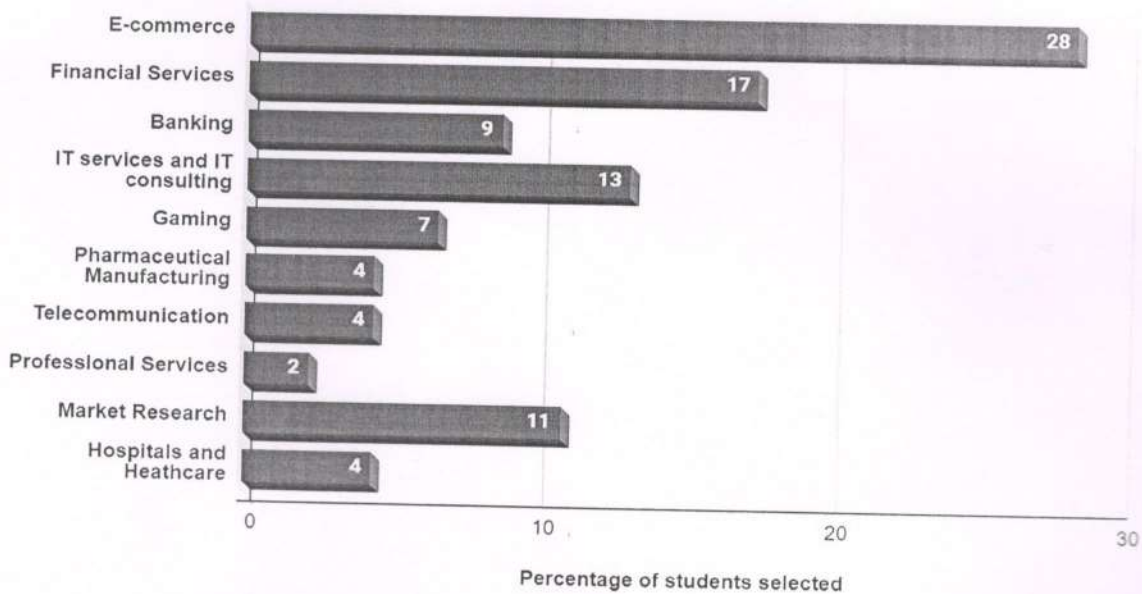
At Symbiosis Statistical Institute, we remain committed to fostering a nurturing environment that nurtures academic excellence and equips our students with the essential skills for success in their chosen fields. We extend our sincere gratitude to the recruiters, placement and training cell, faculty members, and staff whose unwavering support and dedication have been invaluable throughout the placement process.

Once again, we would like to express our heartfelt appreciation to our esteemed collaborators for their unwavering trust and belief in the capabilities of our institute. We eagerly anticipate further collaboration and mutually beneficial relationships in the future.

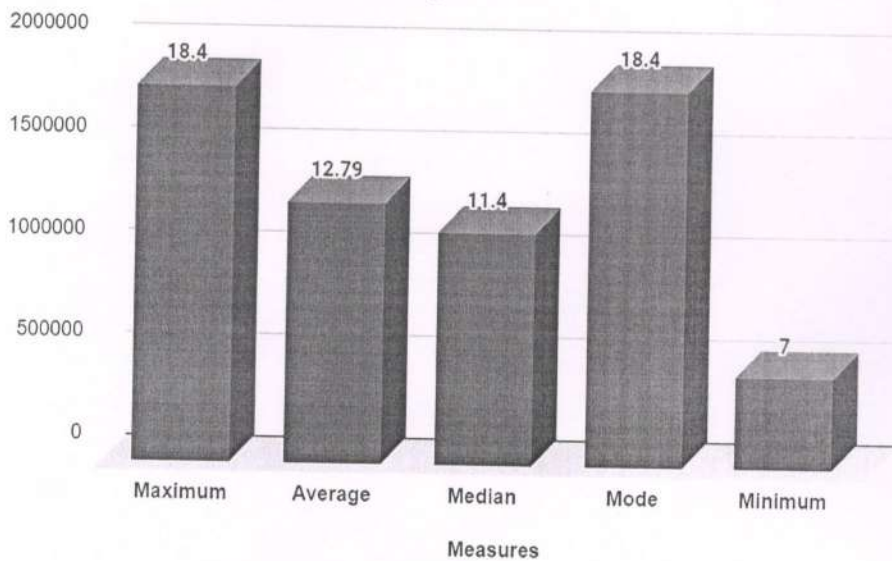
Company Wise Information



Sector Wise Information



Summary of CTC



(Signature)

Prof. Dr Sharvari Shukla,
 Professor and Director,
 Symbiosis Statistical Institute (SSI)

